

# Project Team

- Project Leads: Dr. Nancy Seay (Simmons College) and Dr. Ted Smith (UofL)
  - Simmons Research Team: Jecorey Author, Patricia Reeves, Erin M. Klarer, Solois Shead, Dr. Camara Douglass, Joel Goza, Oleksandra Belinova, Keisha D. Bross, and the fall 2023 Urban Problems and Solutions class at Simmons
  - UofL Research Team: Lauren Anderson, Caison Black, Heather Ness
- Professor Shavonnie Carthens (UK)
- Dr. Michael Emerson (Rice University)

**SIMMONS**  
COLLEGE OF KENTUCKY

UNIVERSITY OF  
**LOUISVILLE**  
CHRISTINA LEE BROWN  
ENVIRONMENT INSTITUTE

**UK** **Rosenberg**  
College of Law

RICE UNIVERSITY'S  
**Baker**  
**Institute**  
for Public Policy

# Residents' Descriptions of Neighborhood Health Assets

Dr. Nancy Seay, Simmons College of Kentucky

# Dr. Camara Douglas

Patricia Reeves, University of Louisville

EFFICACY FOR NEIGHBORHOOD CHANGE

Words and phrases in the word cloud include:

- Community program makes neighborhoods safer
- Desire to belong is a different neighborhood
- Activities help improve neighborhood in cultural events
- Desire to grow neighborhood in cultural events
- Neighbors treated
- Clipping with neighborhood desire
- Food security present
- Utility systems and present
- Positive perceptions by outsiders
- Neighborhood watch/community policing makes neighborhoods safer
- Unobserved in neighborhood
- Police in neighborhood more than others
- RI not present
- Hospital accessible
- Neighborhood related events
- Feeling related to neighborhood
- Desire for more investment in youth activities
- Cultural events and activities
- Community level measures to promote neighborhood safety
- Access to medical care (MC)
- HOUSING QUALITY
- Processes of neighborhood change
- EXPOSURE TO NATURE
- Policing and neighborhood safety
- Collective efficacy present
- Income inequality (NI)
- Unobserved present
- Desire to belong to neighborhood
- Access to green spaces
- HOUSING AFFORDABILITY
- Institutions providing youth programs and services
- Relationships with neighbors
- Institutions and activities supported primarily through taxes
- SOCIAL COHESION/SOCIAL SUPPORT
- NEIGHBORHOOD SAFETY
- NEIGHBORHOOD INSTITUTIONS
- Residents' perceptions of safety in their neighborhood
- Government investment in green spaces
- My neighborhood is not safe
- Coping with increased neighborhood violence
- Other community level measures to make neighborhoods safe
- Pollution sources are not nearby
- NEIGHBORHOOD STIGMA
- Proximity to pollution sources
- Walking and walkability
- Food access assets
- RESIDENTIAL SEGREGATION (RS)
- My neighborhood is safe
- Residents' perceptions of their own neighborhood
- Outsiders' perceptions make me want to move to another neighborhood
- Private transportation
- Social isolation
- Abandoned homes in neighborhood
- Other mothers/Big Mama's/Mentors
- Negative perceptions of one's own neighborhood
- Investment in cultural events
- Income related neighborhood assets
- Social media (e.g., Facebook) makes neighborhoods safer
- Does share values with neighbors
- Signs contributes to double-consciousness
- Physically Accessible
- Ventilation, air, and heat systems
- Does not share values with neighbors
- No or little access to green spaces
- Utilities systems
- Decreased over time
- Non-homeowners
- Neighbors not treated
- Gentrification good
- Gentrification present
- Neighbors helpful
- Gyms and fitness centers
- Future assets
- Neighbors not helpful
- Desire for more green spaces
- Supermarkets have low quality foods
- Gentrification and displacement
- Coping with neighborhood stigma
- Neighborhood declining
- Public transportation
- Involvement in neighborhood change
- Neighborhood business
- Outsiders perceptions of my neighborhood
- Neighborhood belonging
- Increased neighborhood violence
- Parks, Recreational Facilities and Green spaces
- HOUSING AFFORDABILITY
- Supermarkets not physically accessible
- Institutions providing youth programs and services
- Relationships with neighbors
- Institutions and activities supported primarily through taxes
- SOCIAL COHESION/SOCIAL SUPPORT
- NEIGHBORHOOD SAFETY
- NEIGHBORHOOD INSTITUTIONS
- Residents' perceptions of safety in their neighborhood
- Government investment in green spaces
- My neighborhood is not safe
- Coping with increased neighborhood violence
- Other community level measures to make neighborhoods safe
- Pollution sources are not nearby
- NEIGHBORHOOD STIGMA
- Proximity to pollution sources
- Walking and walkability
- Food access assets
- RESIDENTIAL SEGREGATION (RS)
- My neighborhood is safe
- Residents' perceptions of their own neighborhood
- Outsiders' perceptions make me want to move to another neighborhood
- Private transportation
- Social isolation
- Abandoned homes in neighborhood
- Other mothers/Big Mama's/Mentors
- Negative perceptions of one's own neighborhood
- Investment in cultural events
- Income related neighborhood assets
- Social media (e.g., Facebook) makes neighborhoods safer
- Does share values with neighbors
- Signs contributes to double-consciousness
- Physically Accessible
- Ventilation, air, and heat systems
- Does not share values with neighbors
- No or little access to green spaces
- Utilities systems
- Decreased over time
- Non-homeowners
- Neighbors not treated
- Gentrification good
- Gentrification present
- Neighbors helpful
- Gyms and fitness centers
- Future assets
- Neighbors not helpful
- Desire for more green spaces
- Supermarkets have low quality foods
- Gentrification and displacement
- Coping with neighborhood stigma
- Neighborhood declining
- Public transportation
- Involvement in neighborhood change
- Neighborhood business
- Outsiders perceptions of my neighborhood
- Neighborhood belonging
- Increased neighborhood violence
- Parks, Recreational Facilities and Green spaces
- HOUSING AFFORDABILITY
- Supermarkets not physically accessible
- Institutions providing youth programs and services
- Relationships with neighbors
- Institutions and activities supported primarily through taxes
- SOCIAL COHESION/SOCIAL SUPPORT
- NEIGHBORHOOD SAFETY
- NEIGHBORHOOD INSTITUTIONS
- Residents' perceptions of safety in their neighborhood
- Government investment in green spaces
- My neighborhood is not safe
- Coping with increased neighborhood violence
- Other community level measures to make neighborhoods safe
- Pollution sources are not nearby
- NEIGHBORHOOD STIGMA
- Proximity to pollution sources
- Walking and walkability
- Food access assets
- RESIDENTIAL SEGREGATION (RS)
- My neighborhood is safe
- Residents' perceptions of their own neighborhood
- Outsiders' perceptions make me want to move to another neighborhood
- Private transportation
- Social isolation
- Abandoned homes in neighborhood
- Other mothers/Big Mama's/Mentors
- Negative perceptions of one's own neighborhood
- Investment in cultural events
- Income related neighborhood assets
- Social media (e.g., Facebook) makes neighborhoods safer
- Does share values with neighbors
- Signs contributes to double-consciousness
- Physically Accessible
- Ventilation, air, and heat systems
- Does not share values with neighbors
- No or little access to green spaces
- Utilities systems
- Decreased over time
- Non-homeowners
- Neighbors not treated
- Gentrification good
- Gentrification present
- Neighbors helpful
- Gyms and fitness centers
- Future assets
- Neighbors not helpful
- Desire for more green spaces
- Supermarkets have low quality foods
- Gentrification and displacement
- Coping with neighborhood stigma
- Neighborhood declining
- Public transportation
- Involvement in neighborhood change
- Neighborhood business
- Outsiders perceptions of my neighborhood
- Neighborhood belonging
- Increased neighborhood violence
- Parks, Recreational Facilities and Green spaces
- HOUSING AFFORDABILITY
- Supermarkets not physically accessible
- Institutions providing youth programs and services
- Relationships with neighbors
- Institutions and activities supported primarily through taxes
- SOCIAL COHESION/SOCIAL SUPPORT
- NEIGHBORHOOD SAFETY
- NEIGHBORHOOD INSTITUTIONS
- Residents' perceptions of safety in their neighborhood
- Government investment in green spaces
- My neighborhood is not safe
- Coping with increased neighborhood violence
- Other community level measures to make neighborhoods safe
- Pollution sources are not nearby
- NEIGHBORHOOD STIGMA
- Proximity to pollution sources
- Walking and walkability
- Food access assets
- RESIDENTIAL SEGREGATION (RS)
- My neighborhood is safe
- Residents' perceptions of their own neighborhood
- Outsiders' perceptions make me want to move to another neighborhood
- Private transportation
- Social isolation
- Abandoned homes in neighborhood
- Other mothers/Big Mama's/Mentors
- Negative perceptions of one's own neighborhood
- Investment in cultural events
- Income related neighborhood assets
- Social media (e.g., Facebook) makes neighborhoods safer
- Does share values with neighbors
- Signs contributes to double-consciousness
- Physically Accessible
- Ventilation, air, and heat systems
- Does not share values with neighbors
- No or little access to green spaces
- Utilities systems
- Decreased over time
- Non-homeowners
- Neighbors not treated
- Gentrification good
- Gentrification present
- Neighbors helpful
- Gyms and fitness centers
- Future assets
- Neighbors not helpful
- Desire for more green spaces
- Supermarkets have low quality foods
- Gentrification and displacement
- Coping with neighborhood stigma
- Neighborhood declining
- Public transportation
- Involvement in neighborhood change
- Neighborhood business
- Outsiders perceptions of my neighborhood
- Neighborhood belonging
- Increased neighborhood violence
- Parks, Recreational Facilities and Green spaces
- HOUSING AFFORDABILITY
- Supermarkets not physically accessible
- Institutions providing youth programs and services
- Relationships with neighbors
- Institutions and activities supported primarily through taxes
- SOCIAL COHESION/SOCIAL SUPPORT
- NEIGHBORHOOD SAFETY
- NEIGHBORHOOD INSTITUTIONS
- Residents' perceptions of safety in their neighborhood
- Government investment in green spaces
- My neighborhood is not safe
- Coping with increased neighborhood violence
- Other community level measures to make neighborhoods safe
- Pollution sources are not nearby
- NEIGHBORHOOD STIGMA
- Proximity to pollution sources
- Walking and walkability
- Food access assets
- RESIDENTIAL SEGREGATION (RS)
- My neighborhood is safe
- Residents' perceptions of their own neighborhood
- Outsiders' perceptions make me want to move to another neighborhood
- Private transportation
- Social isolation
- Abandoned homes in neighborhood
- Other mothers/Big Mama's/Mentors
- Negative perceptions of one's own neighborhood
- Investment in cultural events
- Income related neighborhood assets
- Social media (e.g., Facebook) makes neighborhoods safer
- Does share values with neighbors
- Signs contributes to double-consciousness
- Physically Accessible
- Ventilation, air, and heat systems
- Does not share values with neighbors
- No or little access to green spaces
- Utilities systems
- Decreased over time
- Non-homeowners
- Neighbors not treated
- Gentrification good
- Gentrification present
- Neighbors helpful
- Gyms and fitness centers
- Future assets
- Neighbors not helpful
- Desire for more green spaces
- Supermarkets have low quality foods
- Gentrification and displacement
- Coping with neighborhood stigma
- Neighborhood declining
- Public transportation
- Involvement in neighborhood change
- Neighborhood business
- Outsiders perceptions of my neighborhood
- Neighborhood belonging
- Increased neighborhood violence
- Parks, Recreational Facilities and Green spaces
- HOUSING AFFORDABILITY
- Supermarkets not physically accessible
- Institutions providing youth programs and services
- Relationships with neighbors
- Institutions and activities supported primarily through taxes
- SOCIAL COHESION/SOCIAL SUPPORT
- NEIGHBORHOOD SAFETY
- NEIGHBORHOOD INSTITUTIONS
- Residents' perceptions of safety in their neighborhood
- Government investment in green spaces
- My neighborhood is not safe
- Coping with increased neighborhood violence
- Other community level measures to make neighborhoods safe
- Pollution sources are not nearby
- NEIGHBORHOOD STIGMA
- Proximity to pollution sources
- Walking and walkability
- Food access assets
- RESIDENTIAL SEGREGATION (RS)
- My neighborhood is safe
- Residents' perceptions of their own neighborhood
- Outsiders' perceptions make me want to move to another neighborhood
- Private transportation
- Social isolation
- Abandoned homes in neighborhood
- Other mothers/Big Mama's/Mentors
- Negative perceptions of one's own neighborhood
- Investment in cultural events
- Income related neighborhood assets
- Social media (e.g., Facebook) makes neighborhoods safer
- Does share values with neighbors
- Signs contributes to double-consciousness
- Physically Accessible
- Ventilation, air, and heat systems
- Does

**SIMMONS**  
COLLEGE OF KENTUCKY

# How Do Residents Describe Health Assets in Their Neighborhood?



SURVEYS

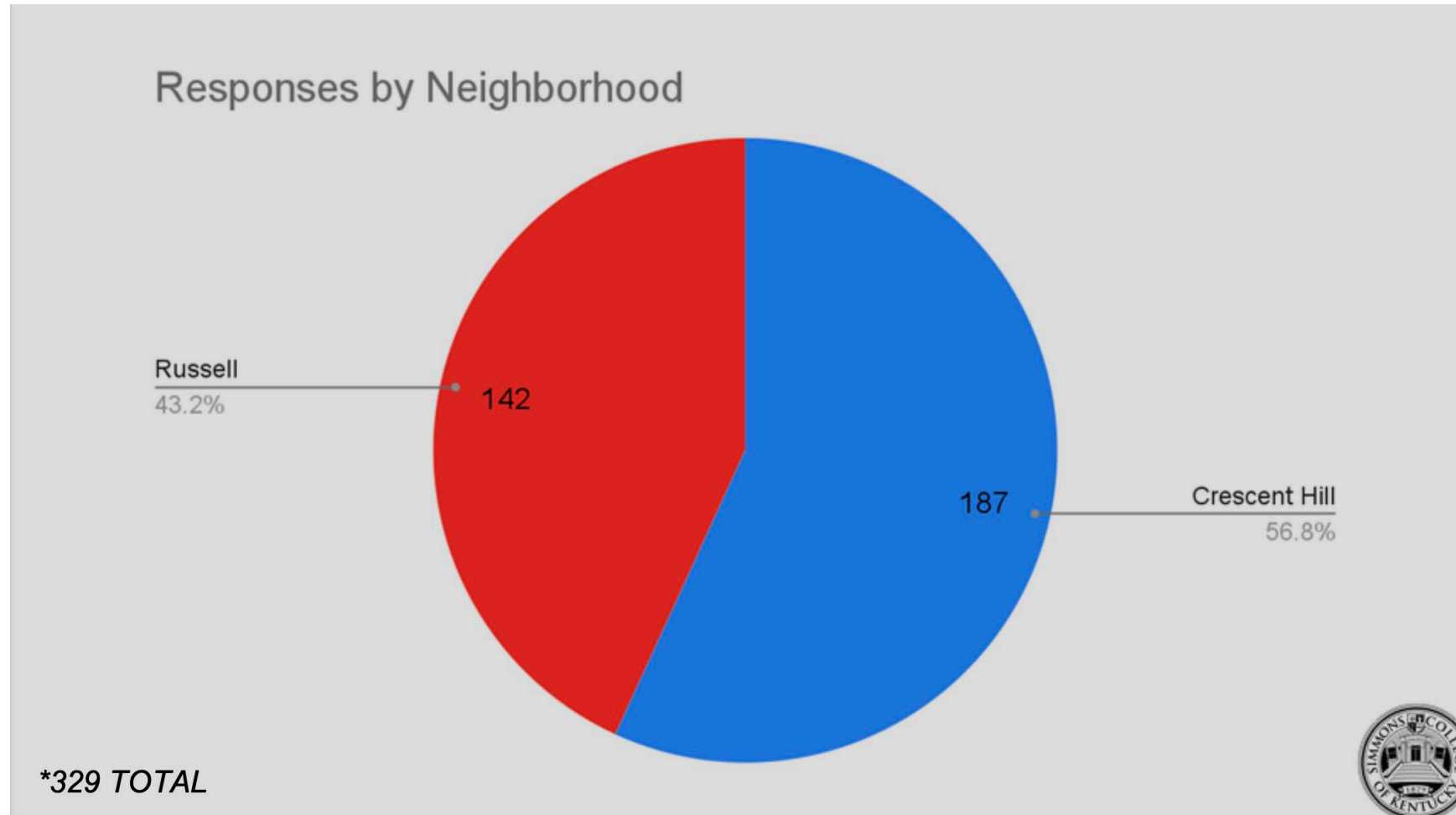


FOCUS GROUPS



KEY NEIGHBORHOOD  
INFORMANTS

# Surveys



# Focus Group Composition

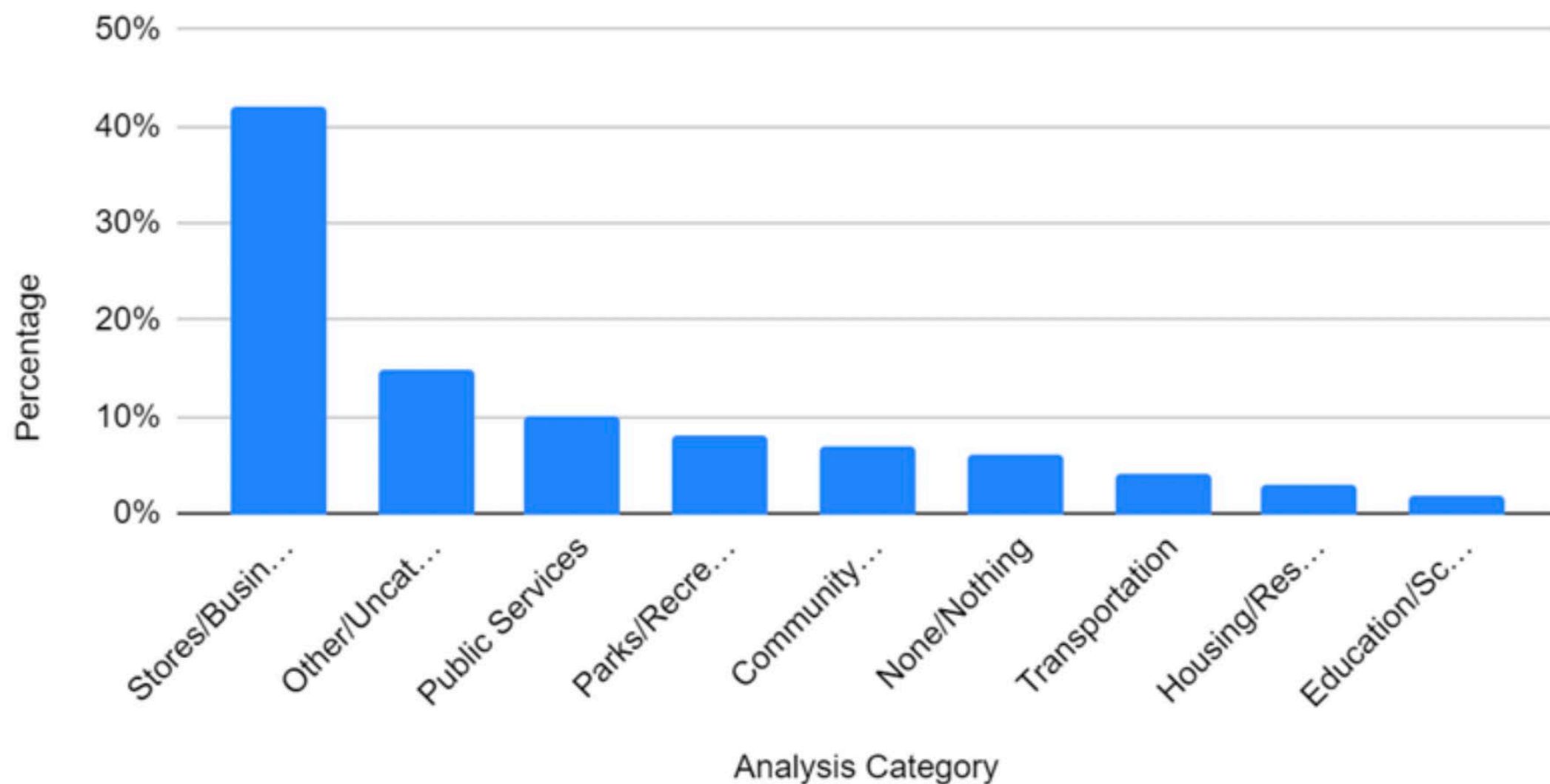
Group	Number of Participants	Mean Years in Neighborhood	Range of Years in Neighborhood
Russell 1	4	16	10-30
Russell 2	2	22	22
Russell 3	5	32	2-70
Russell 4	12	6	1-14
Mixed	5 (3 Russell)	4	1-6
<b>Total</b>	26		

# Key Neighborhood Informant Interviews

- Key informant interviews (KIIs) are qualitative in-depth interviews with people who know what is going on in the community.
- The KIIs were identified by focus group participants in both neighborhoods.
- Ten (4 in CH and 6 in Russell) KIIs were conducted by Dr. Camara Douglas.

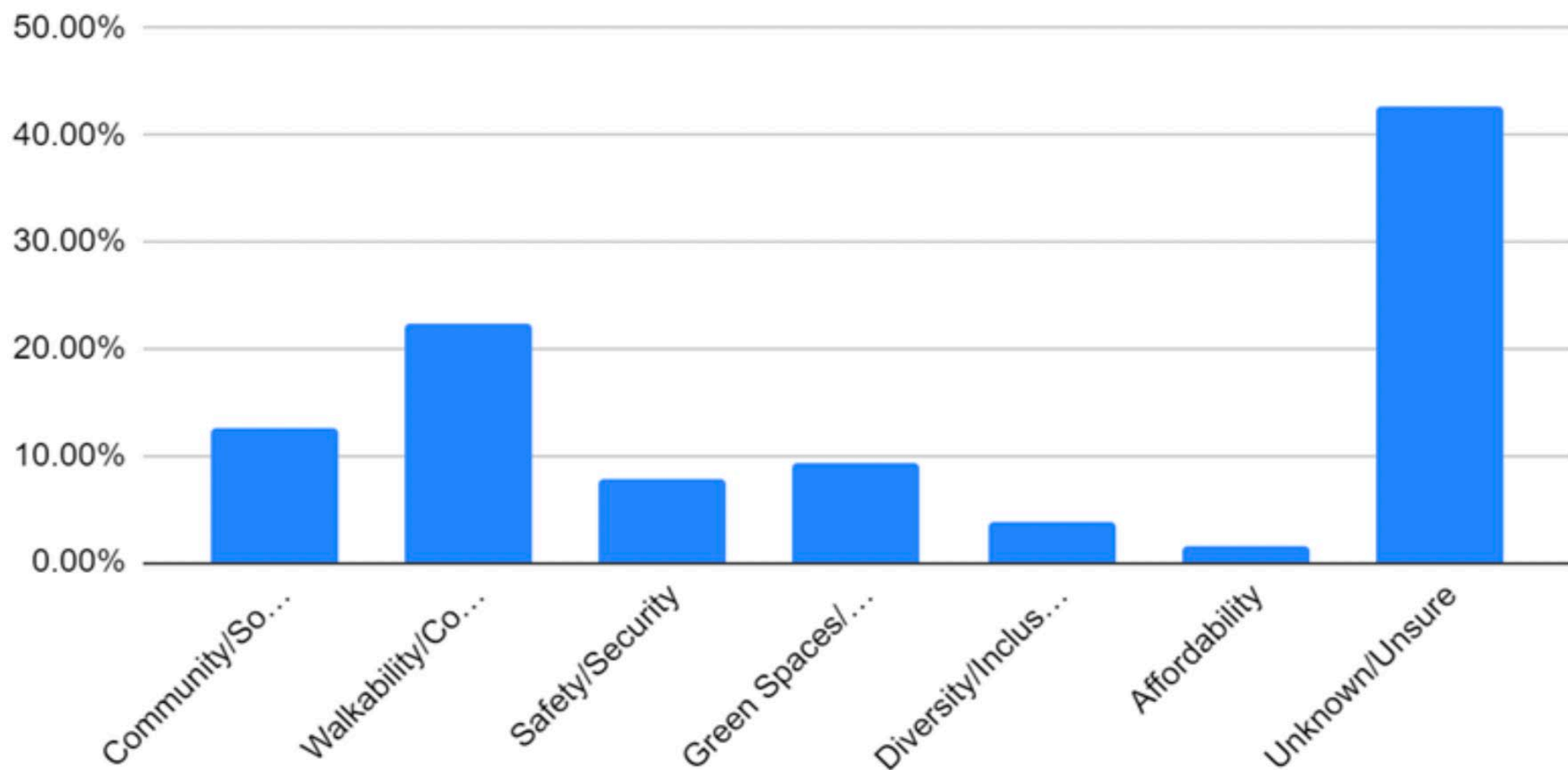
What Do Residents  
Identify as Health Assets  
in their Neighborhoods?

### 3. What are the top three resources you use in this neighborhood?





#### 4. What adds to the wellbeing of people living in this neighborhood?



# FG: What Contributes to Health in This Neighborhood?

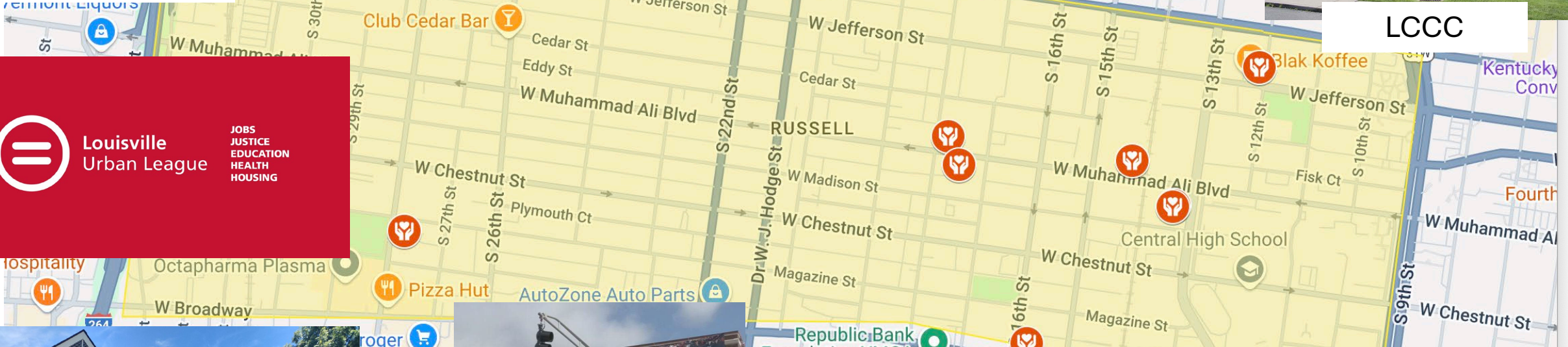
- **Nearby charitable nonprofits** – Goodwill Opportunity Campus, YMCA, Elder Serve, LCCC, St. Vincent DePaul, Change Today, Play Cousins, churches...
- **Proximity to healthcare** – new Norton Hospital, Family Health Center, Centerwell, Park DuValle Medical Center, YMCA...
- **Schools, parks, public transportation, food outlets**



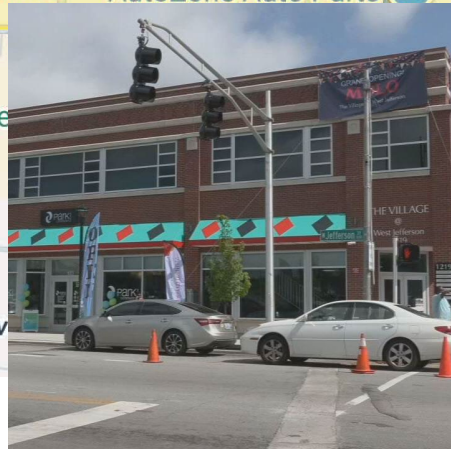
Kentucky Center for African American Heritage



LCCC



Elder Serve



MOLO Village



Norton Health Sports Center





# Describe some of the things that contribute to health in this neighborhood.

The church. The churches. As far as the church up the street, the 7<sup>th</sup> Day Adventist Church. Every 3rd Sunday they give out a food basket and they donate as much as they possibly can. (RUS FG2)

We have a *high* school.  
...And then we got an elementary school there.  
Yeah. (Rus Mixed)

We just got a new Goodwill! ...The hospital will be ready by the end of this year. ...They are redoing Elliott Park (RUS FG1)

**Man:** Elder Serve for health.

**Woman1:** TARC three.

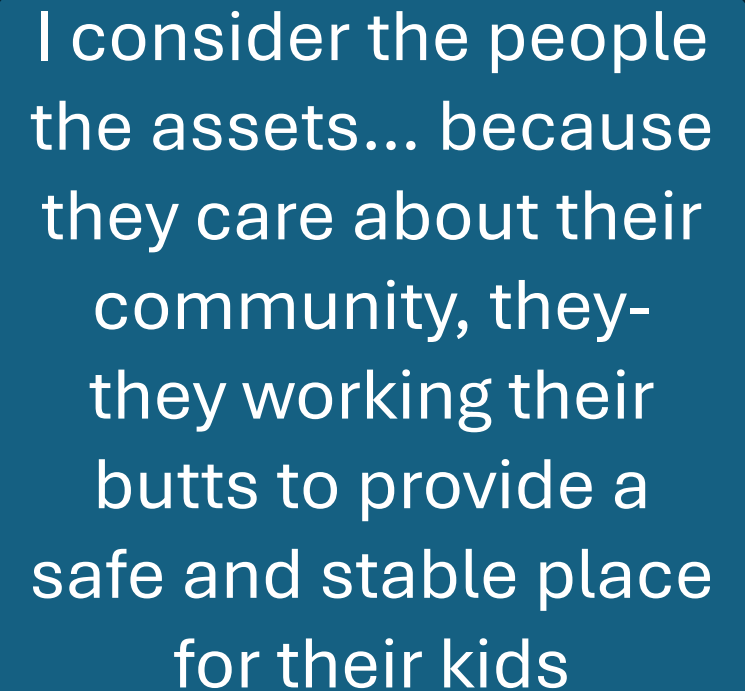
**Woman 2:** that Norton's over there, uh, Goodwill...

**Woman3:** Family Health Center

**Woman4:** Centerwell (RUS FG4)

# KII: What is working well in this neighborhood?

- Participants' responses were more likely to reflect their experiences in the neighborhood
- One area of agreement was that Russell residents are the greatest asset
  - Fosters close-knit relationships
  - For sharing knowledge about resources
  - For holding and sharing history of resistance
- Some overlap in discussion about public and charitable institutions



I consider the people the assets... because they care about their community, they- they working their butts to provide a safe and stable place for their kids

# FG & KII: Assets Found only in Russell

- Artistic Appeal (Harlem of the South) – Russell Theatre, Grand Lyric Theatre (LCCC), Artists and Afros (Visual Arts)...
- Historically Black organizations – Elder Serve, Urban League
- Western Library holdings on Black Louisville (Like Schomburg Center in Harlem?)
- Concentration of Black Businesses and AMPED Russell Technology business incubator
- Central High School
- Historic Churches that cooperate to provide resources
- The graveyard (Historic Western Cemetery?)

# Efficacy for Neighborhood Change

What are residents' beliefs about their ability to make their neighborhoods better places?

## 9. I'm interested in finding solutions to improve my neighborhood.

Strongly Disagreed

0.6%

Unsure

10.8%

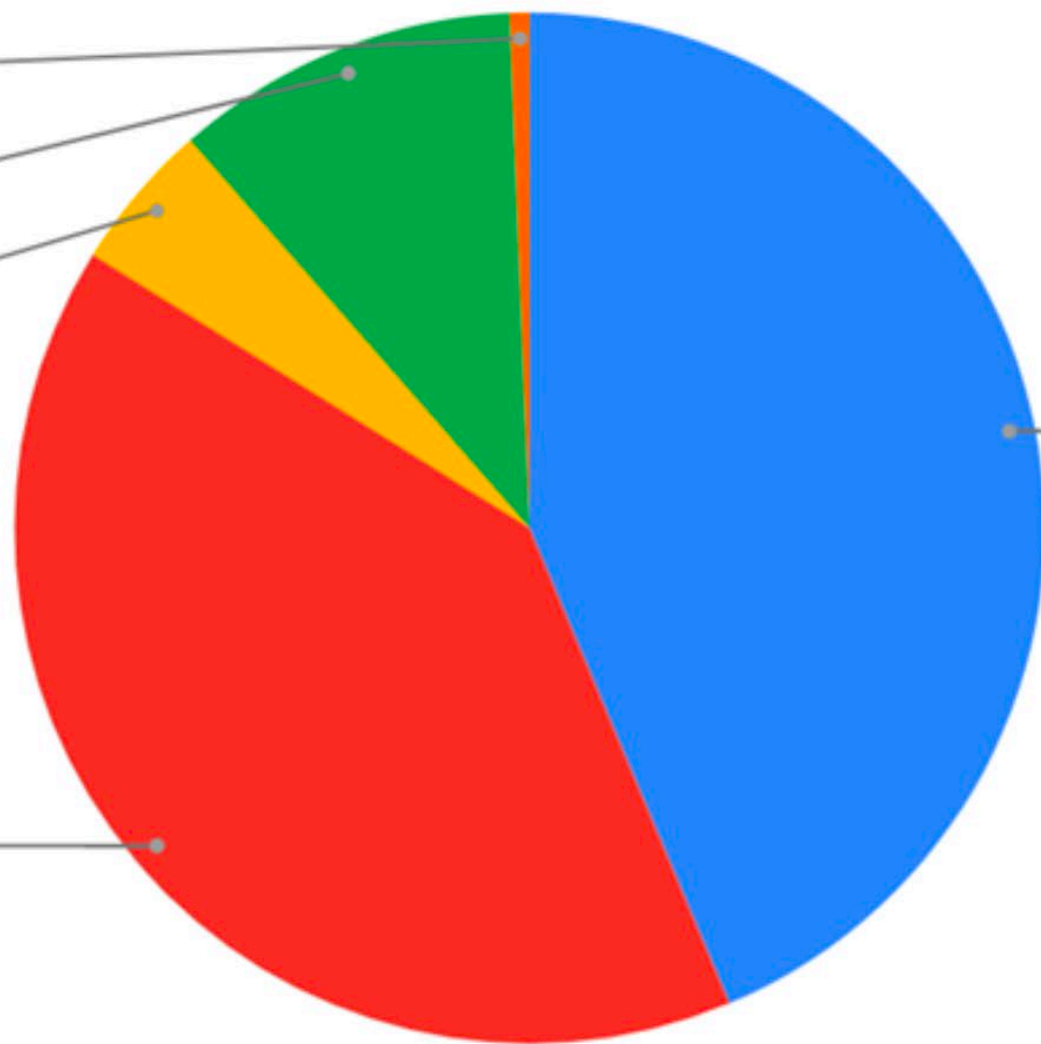
Disagreed

4.6%

Agreed

40.2%

Strongly Agreed  
43.7%





# FG: Tell me some of the neighborhood activities in which you are involved

- Aspirational – Residents knew what needed to be done and, in some cases, how to do it - for neighborhood change
- Their participation in the FGs was evidence of their desire to address neighborhood issues.
- More likely to see evidence of hopelessness



## Aspirations to participate in formal change activities

Alice: I also think we need more volunteers... we gotta come together and form a group

Beth: We gotta get into our youth

Arlene: ...there's a city office that you can call, same concept, if we want to clean around this building, we can call and get gloves, garbage bags, whatever... (RUS FG 4)

I think that if the people would educate themselves better and problem- solving, it could be better because it's like, I don't know what everybody wants... Only way that will change is that people have to change

...we wanted to make certain that people who had an opportunity to say what they felt about the neighborhood.. I unfortunately learned today that the meeting – it was only for ten people... (RUS FG 4)

I just basically became disabled... But I'm determined, I'm going to start getting more involved in community events. That way I can know, you know, first-hand, what's going on. (RUS FG 1)



# Russell Neighborhood residents were involved with change, but through different ways.

You know, I've got these online, you know, Moms Against Guns. But it's not real like you know, Black Lives Matter... (RUS FG 1)

The only group I participate in, I think it's an anti-violence group (RUS FG 3)

I don't have no problem volunteering for anything... Trunk or treat... the JCPS school luncheon they had last year at our church... I volunteered for that. (RUS FG 2)

I try to make friends with everybody. The less fortunate that's out here... (RUS FG 4)

I cook every Thursday for three grandkids... I cook for people on Mondays, every Monday. (RUS FG 3)

I like to grill and when I cook, I do cook enough for spotters... Most of the time it be somebody walking up the street. You holler, "You want something? ... Here. Take this hot dog... We got what we got. I'm not greedy. (RUS FG 2)

I go to a senior meeting, and that's three hours a week.

I participate in-in organizations. NA and AA.